



**FISU**  
WORLD  
UNIVERSITY  
CHAMPIONSHIP  
SKI ORIENTEERING



graubünden

9th of January 2024

Bulletin 4

## 1. WELCOME TO LANTSCH/LENZ LENZERHEIDE

Dear friends,

I am delighted to welcome you to Lantsch/Lenz Lenzerheide for the 2024 FISU World University Championship Ski Orienteering.

Competing at the World University Championships is a career highlight for many university athletes. For others, it is a step up to the next level of performance. What they all have in common is that they meet like-minded people. May these competitions not only serve as a sporting comparison but also as an opportunity for intercultural exchange. This is of particular importance and significance in the challenging times we are all facing.

From this point of view, we are reminded of the need to prioritise sport and healthy social exchange. FISU firmly believes that university athletes are the role models and future leaders the world needs, now more than ever.

Over the following six days, you will compete alongside some of the best student athletes in the world. The FISU World University Championships demand skill, athleticism, and single-minded determination to do your best. But beyond the competition, FISU urges you to take full advantage of this moment. May you return home with memories that will last a lifetime and perhaps even some new friends from faraway places.

None of FISU's events would be possible, meanwhile, without the gracious generosity of our hosts. I want to extend our sincere gratitude to the National University Sports Federation of Switzerland, the organisers for their dedication and the volunteers for their strong will to serve this event. I am confident you will do the same.

FISU is also grateful for the ongoing support of the International Sports Federations. Together, we aim to provide the highest level of technical excellence on and off the field of play. We remain convinced that the best student athletes deserve nothing less.

I am confident that the 2024 FISU World University Championship Ski Orienteering in Lantsch/Lenz Lenzerheide will give you every opportunity to shine. I wish you the best of luck!



Leonz Eder  
FISU President

On behalf of the International University Sports Federation, we would like to welcome you to the 2024 World University Championship Ski Orienteering in Lantsch/Lenz in the tourism destination of Lenzerheide from the 12<sup>th</sup> to the 16<sup>th</sup> of January 2024. Lenzerheide is located in Eastern Switzerland, in the Canton of Grisons. It is known for hosting a number of international sports events such as the Cross-country Skiing World Cup, the Biathlon World Cup and the MTB world cup, but that is not all. The three names of the region – Graubünden, Grischun and Grigioni – give a hint of the rich cultural fabric that can be experienced here, where German, Romansh, and Italian meet.

We are expecting the participation of more than fifteen nations and a colourful array of athletes who live the FISU motto “excellence in mind and body”! We will offer fair and exciting competitions in a breath-taking alpine landscape and are thrilled to see you competing.

See you there!

The organising committee

## 2. ABOUT

**Organisers** Swiss University Sports  
Swiss Orienteering  
Ski-O Swiss

**Event manager** Jürg Hellmüller

**Competition Manager** Hansruedi Häny

**FISU Technical Delegate** Markku Vauhkonen

**IOF Senior Event Adviser** Sixten Sild

**Hosting city** Lantsch/Lenz Lenzerheide, Switzerland

**Event center** Roland Arena  
Via da Bual 2  
CH-7083 Lantsch/Lenz



Map with all relevant locations.





<b>Website</b>	www.wusoc.ch
<b>Social media</b>	follow us on Instagram: @fisuskiorienteeing  follow us on Facebook: 2024 FISU World University Championship Ski Orienteering
<b>Contact</b>	<a href="mailto:info@wusoc.ch">info@wusoc.ch</a> +41 79 722 71 35 (during info desk opening hours)
<b>Emergency</b>	144

### 3. PROGRAMME

Date	FISU	WRE & Open
11.1.24	Model event	-
12.1.24	Sprint	WRE & Open Race
13.1.24	Pursuit	National event & WRE
14.1.24	Rest day	Swiss Championships
15.1.24	Middle	WRE & Open Race
16.1.24	Sprint Relay	Open Sprint Relay

From the 21<sup>st</sup> to the 27<sup>th</sup> of January 2024, the World Ski Orienteering Championships will take place in Ramsau am Dachstein, Austria. The competitions will share similarities in terrain with open areas and many wide tracks. The 2024 World University Championship Ski Orienteering can thus serve as valuable preparation for WSOC. Athletes not taking part in the World University Championship competitions can start in the spectator races that will use the same competition area and track system. **Members of WUC delegations (athletes and staff) are not allowed to start at the spectator race on Sunday 14.1.24.** Booking of accommodation well in advance is strongly recommended (see 8. accommodation).

## 4. PARTICIPATION

Competitors in the 2024 World University Championship Ski Orienteering must satisfy the following requirements:

- national of the country they represent
- born between the 1<sup>st</sup> of January 1999 and the 31<sup>st</sup> of December 2006
- enregistered with a university or other organisation that is recognised by the appropriate national academic authority of their country or having last been enregistered with such an organisation in the year before the competition (2023)

Delegations may consist of eight (8) female athletes, eight (8) male athletes and five (5) officials, totalling twenty-one (21) representatives per country.

We are happy to welcome 105 people from 14 nations:

- Bulgaria (4)
- China (6)
- Czechia (10)
- Estonia (8)
- Finland (12)
- Germany (3)
- Italy (3)
- Japan (12)
- Latvia (4)
- Lithuania (4)
- Norway (14)
- Sweden (11)
- Switzerland (12)
- Türkiye (2)

## 5. REGISTRATION

### Maximum entries per competition and country

Individual competitions: Six (6) female athletes & six (6) male athletes

Sprint relay: two (2) teams of two (2) athletes of which at least one (1) female

All delegations are required to register online through the FISU accreditation portal:

<https://accreditation.fisu.net/Pages/Home.aspx>

The entries are to be made by the National University Sports Federations.

### Entry deadlines

General entry	12 <sup>th</sup> of August 2023
Quantitative entry	12 <sup>th</sup> of October 2023
Individual entry	12 <sup>th</sup> of December 2023

Individual entries need to happen in the FISU accreditation portal as well as IOF Eventor! The registration needs to be confirmed before the GTM of each race.

## Entry fees

Registration fee	20 € per person
Participation fee	80 € per person & night

The entry fees should be paid per delegation to the following bank account:

## Bank details

Bank PostFinance AG  
Mingerstrasse 20, CH-3030 Berne, Switzerland

Account 16-600122-1

WUSOC 2024  
Mühlestrasse 28  
CH-7260 Davos Dorf

IBAN CH96 0900 0000 1606 0122 1  
BIC POFICHBEXXX  
BCC 09000

## 6. TRAVEL

All delegations are responsible for their arrival in and departure from Switzerland. Transport from and to the different access points will be organised.

Mode of transport	Access point
Train	Chur main station
Team bus	Roland Arena Lantsch/Lenz
Plane	Zurich airport

The mode of transport is to be communicated to the organiser until the 15<sup>th</sup> of December 2023 by filling out the following inquiry:

<https://forms.gle/FCJwxEn1HQSex7A48>

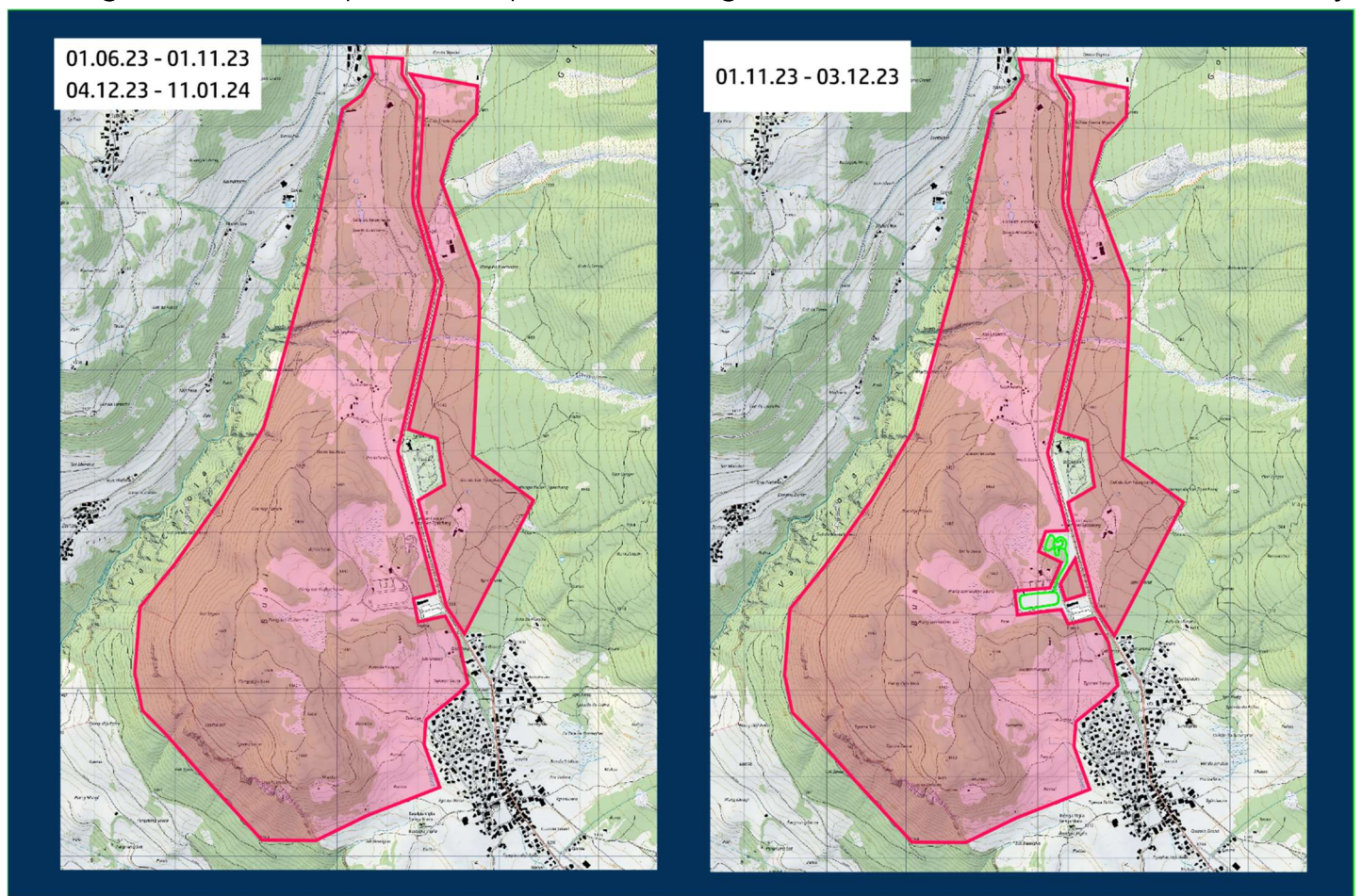


Please consider travelling by train where feasible and help us to make the World University Championship Ski Orienteering a sustainable event. Our partner SimpleTrain will gladly help you organise your train travel and grant you a generous offer on their service.

During competition week, transport to and from the competition centre will be organised.

## 7. EMBARGOED AREA & TERRAIN

The embargo is in effect with the publication of Bulletin 0 on the 16<sup>th</sup> of June 2023 and ends after the sprint relay on the 16<sup>th</sup> of January 2024. The cantonal road from Lantsch/Lenz to Lenzerheide, the campsite St. Cassian, as well as the parking area and main building of the Roland Arena are except from the embargoed area. From the 1<sup>st</sup> of November until the 3<sup>rd</sup> of December 2023, the snow-farming track as indicated in the map on the right is open for training. In order to guarantee fair competitions, the snow-farming track will be open for inspection during the model event on the 11<sup>th</sup> of January



2024. During competition week are competing athletes except from the embargo for the duration of their race.

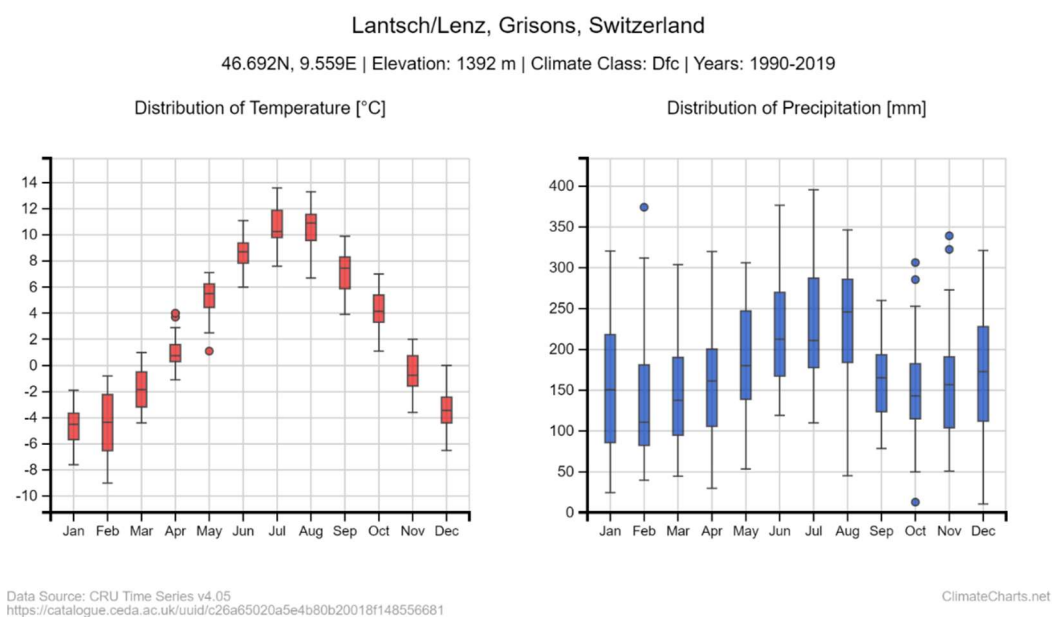
From the Roland Arena in Lantsch/Lenz country tracks spread out to the North, West and South which will be complemented with scooter tracks where suitable. The competitions area is located between 1350m a.s.l. and 1500m a.s.l and covers coniferous forest, semi-open areas and open areas including a golf park. Visibility in the forest is generally good to moderate. Climbs and descents can be steep.

Previous maps from ESOC 2015 can be found under [wusoc.ch](http://wusoc.ch).

### Weather & snow conditions

Good snow conditions can never be guaranteed but thanks to the altitude, the Lenzerheide high valley normally sees snow most of the winter. The competition area is exposed to the South and surrounded by mountain ranges which lead to a somewhat drier climate. While temperatures below 0° C can be expected, the variation in precipitation in December and the beginning of January may have a negative impact on the snow conditions. Thanks to artificial snow production and snowfarming, the track in the stadium gets usually prepared at the beginning of November. Track quality may thus vary between inside the stadium and outside under scarce snow conditions.

Be aware that weather conditions on competition day can change quickly due to the mountainous location and clothe accordingly.





**8. ACCOMODATION**



Due to the World Economic Forum taking place in Davos during the 2024 World University Championship Ski Orienteering will the delegations be accommodated in different 3-star hotels located in the towns of Churwalden, Tiefencastel, Cunter and Savognin. Transport time to the competition centre in Lantsch/Lenz is 15-25 minutes. Participants in the spectator races should find suitable accommodation online. The organiser can be of assistance if needed. Early booking is strongly recommended.



## 9. WAXING FACILITIES

Waxing facilities will be available in the competition centre at the biathlon arena Lantsch/Lenz. Please use the cabin allocated to your delegation. Waxing in the quarantine is not allowed. Skis ready for racing have to be dropped off in the designated area by 10:00.

## 10. LEGAL NOTICE

### Insurance

All competitors and staff participate at their own risk. Insurance against accidents and illness is the responsibility of the participants.

### Changes in program & cancellation of competitions

The organisers can change the program or cancel competitions if the conditions call for such a change. Conditions include among others the snow situation, extreme weather and matters of public health and safety.

### Protection of data

In accordance with Swiss and EU data protection laws do all participants (competitors and staff) consent to the possibility of being photographed and filmed during the competitions and on the premises of the 2024 FISU World University Championship Ski Orienteering as well as being featured on the official Instagram and Facebook channels.

### Competition rules

The IOF competition rules 2023 apply to the 2024 FISU World University Championship Ski Orienteering.

The IOF competition rules for WRE races 2023 apply to the WRE open races.

### Fluor ban

The IOF fluor ban declaration applies to the 2024 FISU World University Championship Ski Orienteering as well as the WRE open races.

## Anti-doping

The FISU anti-doping rules apply to the 2024 FISU World University Championship Ski Orienteering.

The IOF anti-doping rules apply to the WRE spectator races.

## Transparency

Family members and club mates of participating Swiss athletes as well as non-participating athletes of the Swiss national team are involved in the organisation of the 2024 FISU World University Championship Ski Orienteering. We appreciate that this can pose a threat to the fair play our sport relies on. However, ski orienteering is a small sport and without the involvement of these people, we could not offer competitions of the highest quality. Extra care will be taken to make sure no confidential details reach any of the participating athletes.

## 11. TECHNICAL INFO

### Time keeping

Time keeping will be based on SPORTident. All competitors will carry two SI cards, one main unit and one back-up unit. These will be provided by the organiser, except for athletes that want to race with their personal SI card. They will be provided only with a back-up unit. Please make sure that the card ID registered in IOF Eventor matches the ID of the personal SI cards used. Touch-free punching with a radius of 30 cm will be activated.

### Bibs

All competitors will be provided with bibs that are to be carried during the whole competition in order to guarantee fairplay and safety. The bibs are to be picked up before each competition between 9:30 and 10:00 at the information desk.

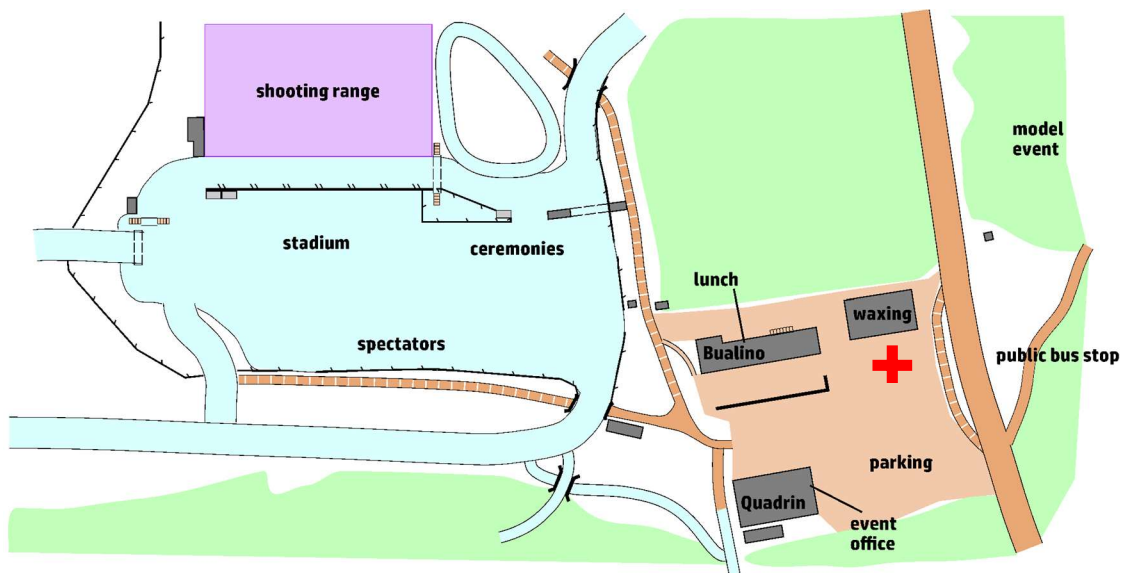
### GPS

All competitors will be provided with a GPS unit. The live tracking will be published and shown in daily videos and social media. The GPS units are to be returned after every race.



## 12. MODEL EVENT 11.1.24

Time	Event	Place
10:00	Model event	Snow farming track / Other side of the road
10:00	Info desk & accreditation centre open	Quadrin
12:00 - 14:00	Lunch	Bualino
15:00	Entry deadline sprint	Eventor / Info desk
15:00	Model event closed	Snow farming track / Other side of the road
16:00	General Technical Meeting sprint & pursuit	Quadrin
16:00 - 17:15	Team photos	Quadrin
17:15	Meeting for opening ceremony	Parking
17:30	Opening ceremony	Stadium
18:30	Start lists sprint published	Website / Eventor
18:20	Early departure bus to accommodation	Roland Arena
18:50	Late departure bus to accommodation	Roland Arena
19:00	Info desk & accreditation centre closed	Quadrin
19:30	Dinner	Accomodation



**Map** Lantsch/Lenz  
Scale 1:10000 / 1:7500 / 1:5000  
5m contour interval

Maps can be picked up at the information desk.

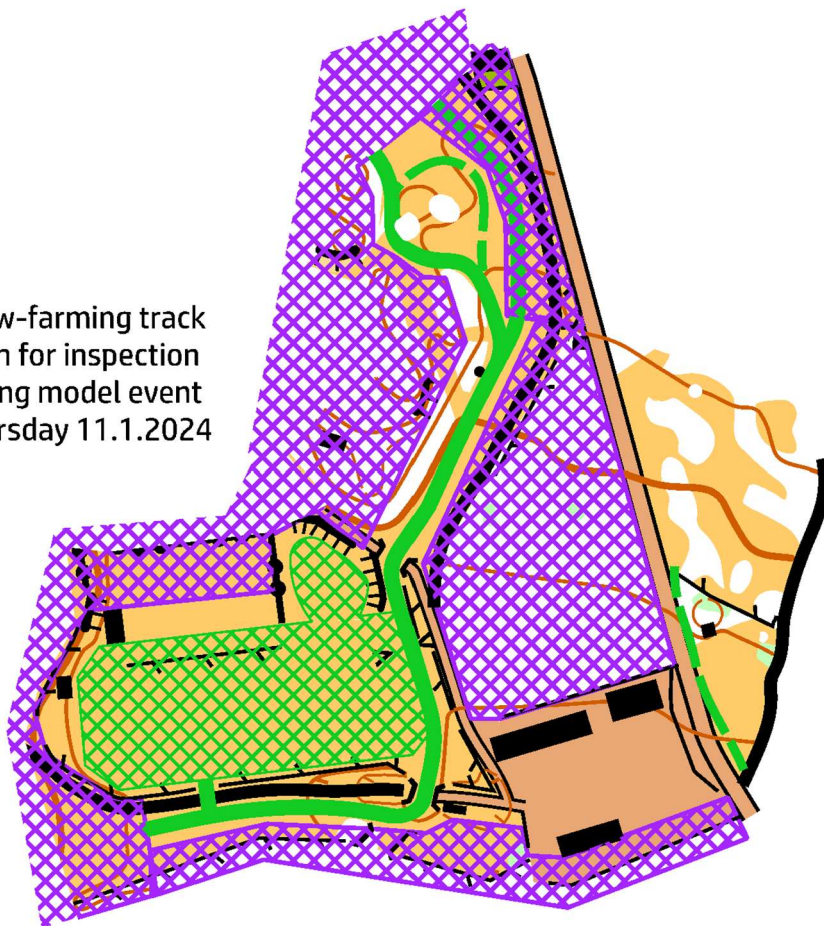
**Training** Both the snow farming track and the model event area are open for free training. Be careful when crossing the road.

**Start** Free start.

**Procedure**

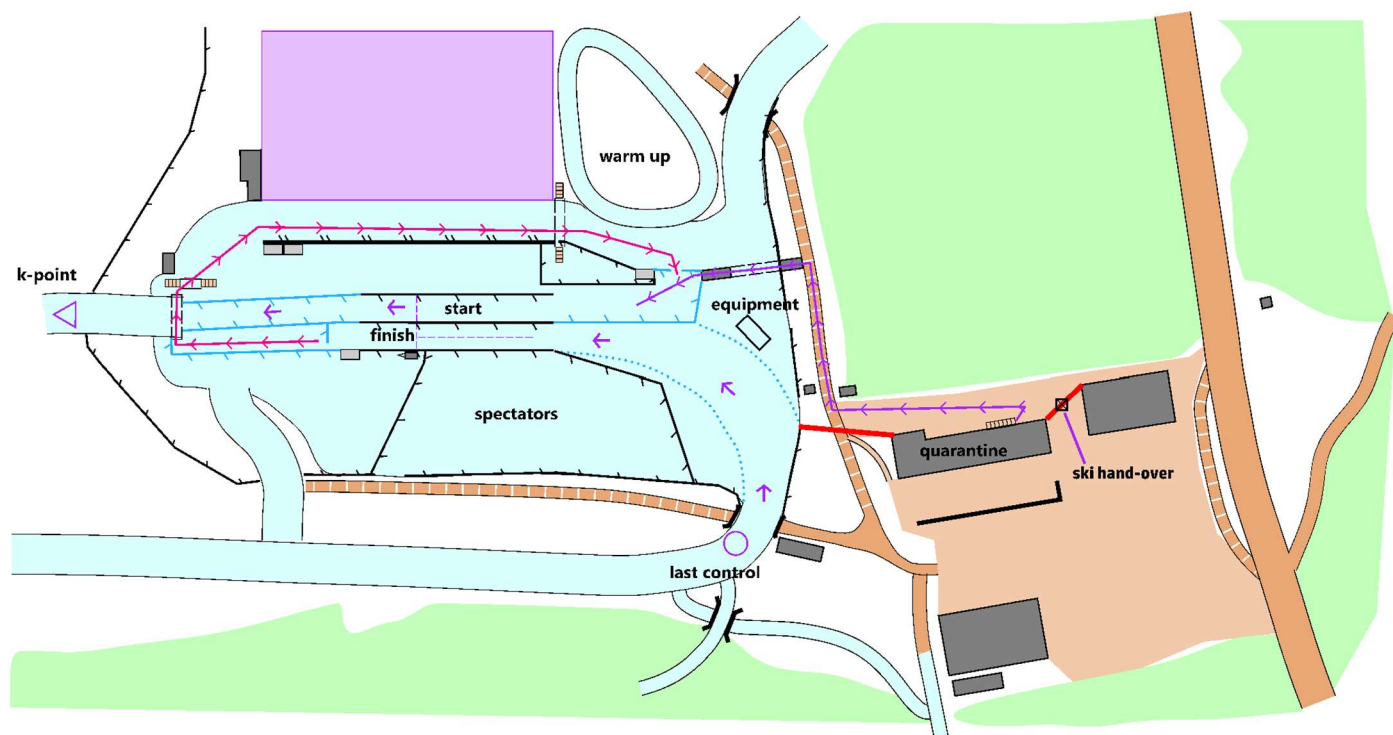
**Finish** Single SI-unit.

snow-farming track  
open for inspection  
during model event  
Thursday 11.1.2024



## 13. SPRINT FRIDAY 12.1.24

Time	Event	Place
7:00 - 8:00	Breakfast	Accomodation
8:20	Departure bus transport to Roland Arena	Accomodation
9:30	Info desk open	Quadrin
10:00	Equipment bag drop-off	Stadium
10:00	Quarantine closed	Bualino
10:00	First start sprint men	Stadium
11:30	First start sprint women	Stadium
12:00 - 14:30	Lunch	Bualino
13:00	Medal ceremony sprint	Stadium
14:25	Departure bus transport to accommodation	Roland Arena
17:00	Start lists pursuit published	Website / Eventor
17:00	Info desk closed	Quadrin
18:30 - 20:00	Dinner	Accomodation



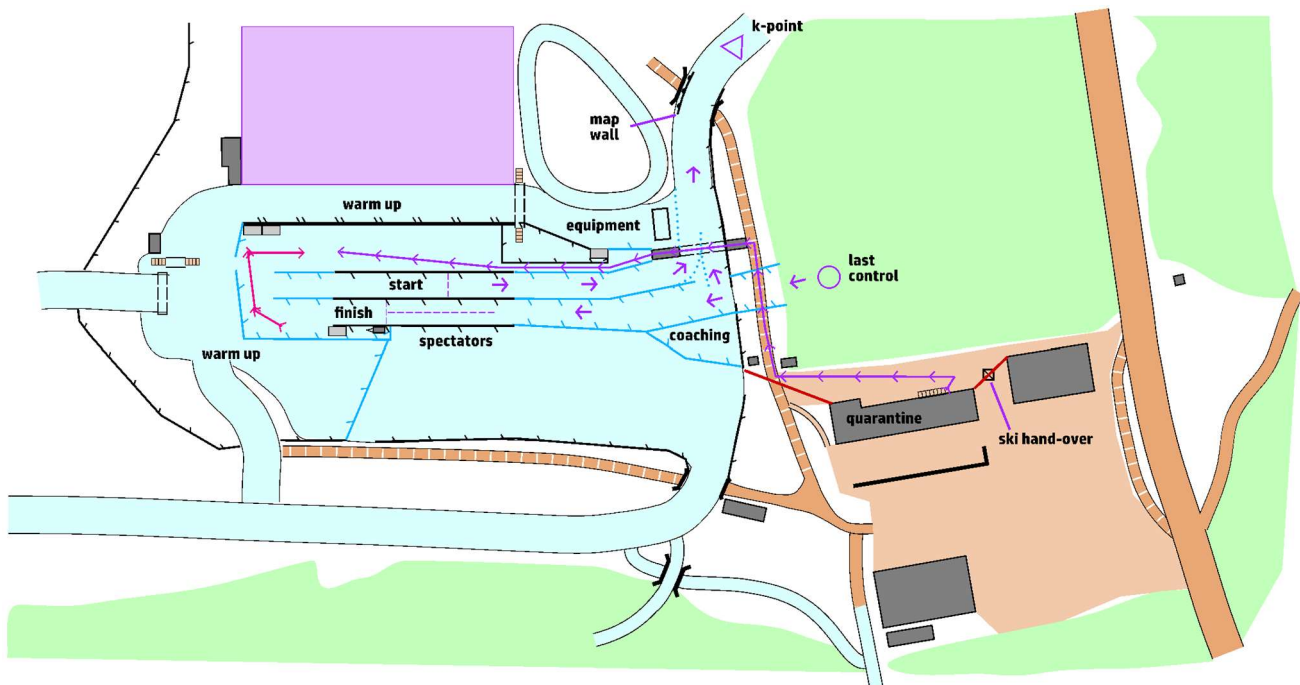


- Map** Lantsch/Lenz  
Scale 1:5000  
5m contour interval
- Quarantine** Closes 10:00. Athletes and staff entering late will be denied. No communication-capable devices are allowed (smartphones, smartwatches ect.). GPS-watches are allowed if all communication-capabilites are disabled. Toilets are available.
- Warm-up** Designated area in the stadium. Once athletes have entered the stadium, they cannot return to the quarantine.
- Spare clothes** Can be dropped off at the pre-start & will be available after the finish.
- Start Procedure**
- |          |                                  |
|----------|----------------------------------|
| -5 mins  | call up                          |
| -4 mins  | GPS                              |
| -3 mins  | clear SIACs                      |
| -2 mins  | check SIACs                      |
| -1 mins  | enter start gate                 |
| -15 secs | map handout & placement<br>start |
- Arena passage** Spectator control close to the arena.
- Finish** Finish arc with finish camera. The time is registered when the SIACs cross the finish line.
- Coaching** Coaches are allowed in the quarantine and the spectator area.
- Equipment** One equipment bag per nation can be placed in the designated area. Only broken equipment may be replaced. Athletes must replace their equipment themselves.
- Refreshment** After the finish.

**Complaints** Must be made at the info desk within 15 mins after the publication of the results. The publication will be announced by the speakers.

## 14. PURSUIT SATURDAY 13.1.24

Time	Event	Place
7:00 - 8:00	Breakfast	Accomodation
8:20	Departure bus transport to Roland Arena	Accomodation
9:30	Info desk open	Quadrin
10:00	Equipment bag drop-off	Stadium
10:00	Quarantine closed	Bualino
10:00	First start pursuit women	Stadium
11:00	First start pursuit men	Stadium
12:00 - 14:30	Lunch	Bualino
12:15	Medal ceremony pursuit	Stadium
14:25	Departure bus transport to accommodation	Roland Arena
17:00	Info desk closed	Quadrin
18:30 - 20:00	Dinner	Accomodation



**Map** Lantsch/Lenz  
Scale 1:7500  
5m contour interval

**Quarantine** Closes 10:00. Athletes entering late will be denied. No communication-capable devices are allowed (smartphones, smartwatches ect.). GPS-watches are allowed if all communication-capabilites are disabled. Toilets are available.

**Warm-up** Designated area in the stadium.

**Spare clothes** Can be dropped off at the pre-start & will be available after the finish.

**Start list** Chasing start. Athletes start with a time penalty reflecting their loss to the winner of the sprint. Athletes who lost more than 10 mins will start in a mass start 10 mins after the first starter in the chasing start.

<b>Start</b>	-7 mins	call up
<b>Procedure</b>	-6 mins	GPS
	-5 mins	clear SIACs
	-4 mins	check SIACs & enter start gate
		start

A clock will show the start time. Athletes are themselves responsible to start at the correct time. The start will be recorded by a start camera. Early looking at the map and early start will be punished by a time penalty. The maps are to be taken from a map wall.

**Arena passage** Arena passage after the first loop.

**Finish** Finish arc with finish camera. The front of the ski boot is considered in the case of a photo finish. The time is registered when the SIACs cross the finish line.



**Coaching** Coaches are allowed in the quarantine and the designated coaching zone in the stadium.

**Equipment** One equipment bag per nation can be placed at the arena passage. Only broken equipment can be replaced. Athletes must replace their equipment themselves.

**Refreshment** After the finish.

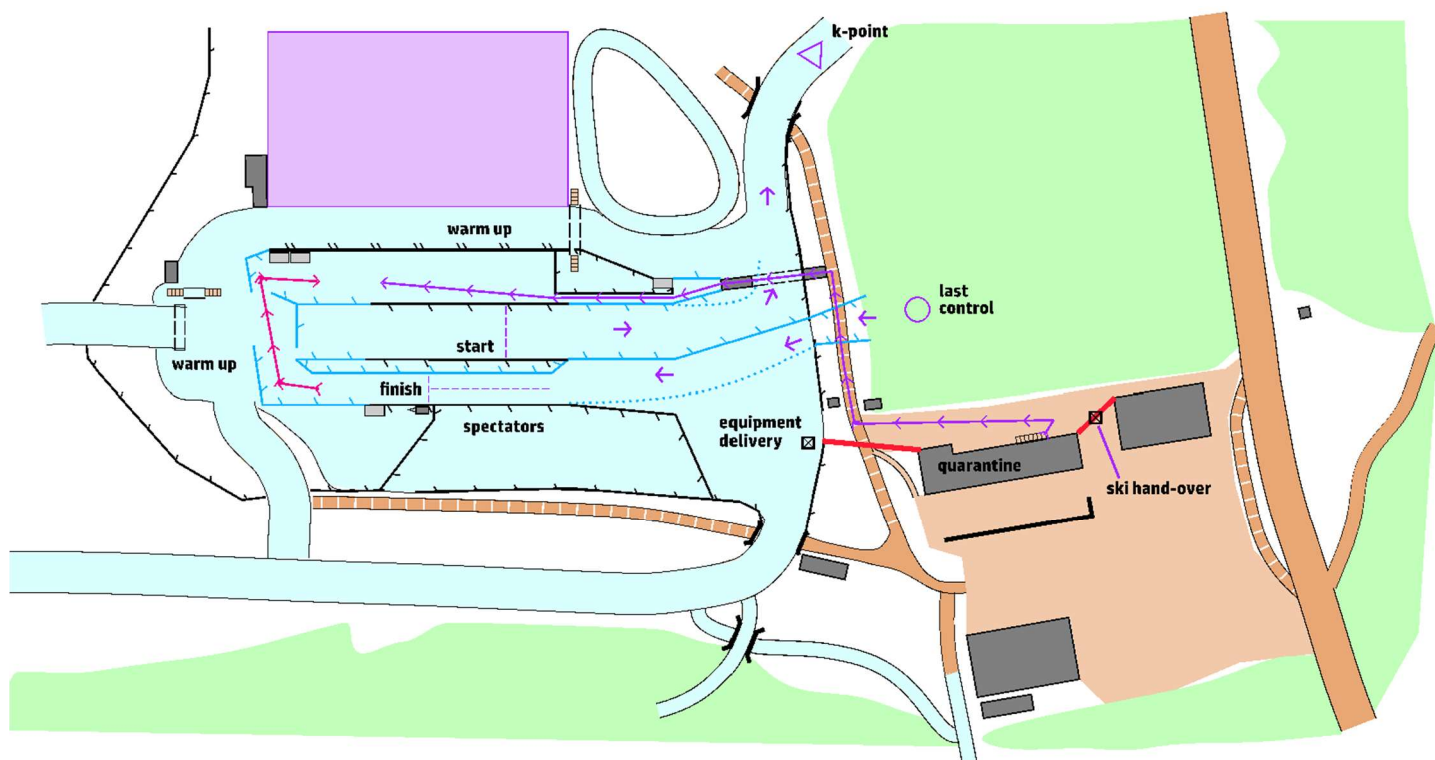
**Complaints** Must be made at the info desk within 15 mins after the publication of the results. The publication will be announced by the speakers.

## 15. REST DAY SUNDAY 14.1.24

Time	Event	Place
7:00 - 8:00	Breakfast	Accomodation
10:00	Info desk open	Quadrin
11:20	Departure bus transport to Roland Arena	Accomodation
12:00 - 13:30	Lunch	Bualino
14:00	Cultural program	Roland Arena
14:00	General Technical Meeting middle & relay	Quadrin
15:00	Entry deadline middle	Eventor / info desk
15:00	Meet & Greet team leaders	Roland Arena
16:20	Departure bus transport to accommodation	Roland Arena
17:00	Start lists middle published	Website / Eventor
17:00	Info desk closed	Quadrin
18:30 - 20:00	Dinner	Accomodation

## 16. MIDDLE MONDAY 15.1.24

Time	Event	Place
7:00 - 8:00	Breakfast	Accommodation
8:20	Departure bus transport to Roland Arena	Accommodation
9:30	Info desk open	Quadrin
9:30	Equipment bag drop-off	Stadium
10:00	Quarantine closed	Bualino
10:00	Mass start middle women	Stadium
11:30	Mass start middle men	Stadium
12:00 - 14:00	Lunch	Bualino
13:00	Medal ceremony middle	Stadium
14:25	Departure bus transport to accommodation	Roland Arena
15:00	Entry deadline sprint relay	Eventor / info desk
17:00	Start lists sprint relay published	Website / Eventor
17:00	Info desk closed	Quadrin
18:30 - 20:00	Dinner	Accommodation



**Map** Lantsch/Lenz  
Scale 1:10000  
5m contour interval

**Quarantine** Closes 10:00. Athletes entering late will be denied. No communication-capable devices are allowed (smartphones, smartwatches ect.). GPS-watches are allowed if all communication-capabilities are disabled. Toilets are available.

**Warm-up** Designated area in the stadium.

**Spare clothes** Can be dropped off at the pre-start & will be available after the finish.

<b>Start</b>	-10 mins	GPS
<b>Procedure</b>	-5 mins	clear SIACs
	-4 mins	check SIACs
	-3 mins	enter start gate
	-1 min	maps handout
	-15 secs	map placement
		start

The start signal will be given by an official with a start gun. A start camera will record the start. Early looking at the map or early start will be punished by a time penalty.

**Arena passage** No arena passage.

**Map flip** The second loop is printed on the back of the map. The loops are indicated with a number (1 or 2) on the respective side.

**Finish** Finish arc with finish camera. The front of the ski boot is considered in the case of a photo finish. The time is registered when the SIACs cross the finish line.

**Coaching** Coaches are allowed in the quarantine and the spectator area.



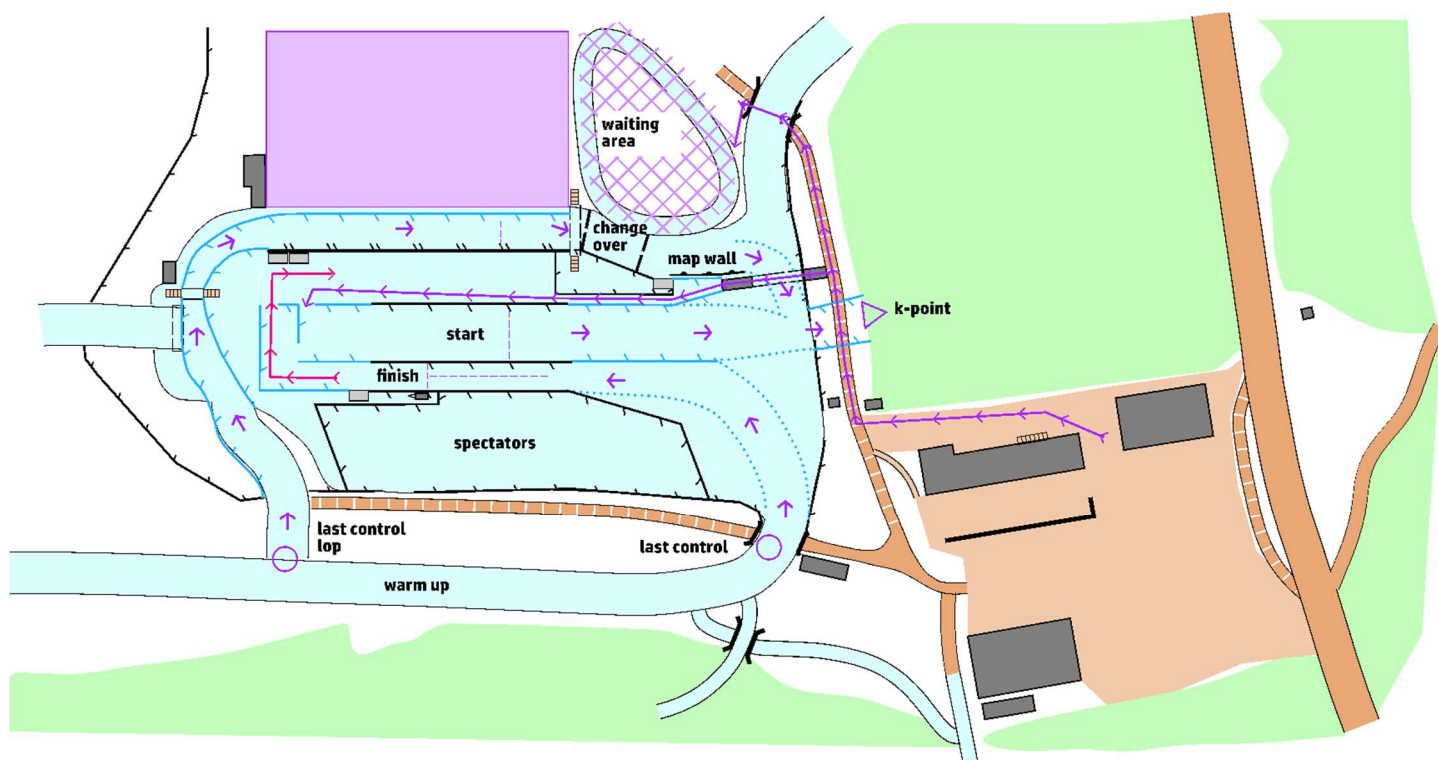
**Equipment** Equipment control in the terrain. One equipment bag per nation can be dropped at the designated area in the stadium until 9:30. Only broken equipment can be replaced. Athletes must replace their equipment themselves.

**Refreshment** After the finish.

**Complaints** Must be made at the info desk within 15 mins after the publication of the results. The publication will be announced by the speakers.

## 17. SPRINT RELAY TUESDAY 16.1.24

Time	Event	Place
7:00 - 8:00	Breakfast	Accomodation
8:20	Departure bus transport to Roland Arena	Accomodation
9:30	Info desk open	Quadrin
10:00	Mass start sprint relay	Stadium
12:00 - 14:00	Lunch	Bualino
12:15	Flower ceremony sprint relay	Stadium
13:50	Departure bus transport to accommodation	Roland Arena
17:00	Info desk closed	Quadrin
17:20	Departure bus transport to Roland Arena	Accomodation
18:00	Medal ceremony & closing ceremony	Quadrin
19:15 - 23:00	Dinner & party	Quadrin
23:00	Departure bus transport to accommodation	Roland Arena



**Map** Lantsch/Lenz  
Scale 1:5000  
5m contour interval

**Warm-up** Model event area & designated area in the stadium. Be careful when crossing the road!

**Spare clothes** Can be dropped off in the waiting area.

**Start list** Mass start. Lap 1, 3 and 5 are skied by the women, lap 2, 4 and 6 are skied by the men. The lineup is determined by the results of WUSOC22 and then alphabetical order. Second teams start behind all first teams:

1	Sweden	8	Japan
2	Switzerland	9	Bulgaria
3	Norway	10	China
4	Lithuania	11	Finland
5	Czechia	12	Italy
6	Estonia	13	Latvia
7	Germany	14	Mixed

**Start Procedure**

-10 mins	GPS
-5 mins	clear SIACs
-4 mins	check SIACs
-3 mins	enter start gate
-1 min	maps handout
-15 secs	map placement
	start

The start signal will be given by an official with a start gun. A start camera will record the start. Early looking at the map and early start will be punished with a time penalty.

**Waiting area** Closes 10:00. Athletes entering late will be denied. No communication capable devices are allowed (smartphones, smartwatches ect.). GPS-watches are allowed if all communication-capabilites are disabled. Toilets



are available. Athletes skiing leg 2, 4 and 6 are to receive their GPS-unit in the waiting area. Before every handover, SIACs need to be cleared and checked.

**Handover** Happens by touch. Maps are to be taken from a map wall. Read-out of the SIACs is to happen directly after handover.

**Finish** Finish arc with finish camera. The front of the ski boot is considered in the case of a photo finish. The time is registered when the SIACs cross the finish line. Read-out of the SIACs is to happen directly after finishing.

**Coaching** Max one coach per nation is allowed in the waiting area. Other coaches are allowed in the spectator area.

**Equipment** One equipment bag per nation can be placed near the waiting area. Only broken equipment can be replaced. Athletes must replace their equipment themselves.

**Refreshment** In the waiting area & after the finish.

**Complaints** Must be made at the info desk within 15 mins after the publication of the results. The publication will be announced by the speakers.

## 18. DEPARTURE WEDNESDAY 17.1.24

Time	Event	Place
7:00 - 8:00	Breakfast	Accommodation
8:00	Info desk open	Quadrin
Individual	Departure bus transport to station / airport	Accommodation
12:00	Info desk closed	Quadrin

## 19. MISCELLANEOUS

### Jury

At the first General Technical Meeting on the 11.1.24, three delegation members from different nations will be elected to form a Jury.

### Podium

The best three (3) in both (men/women) categories will be honoured and awarded at the flower and medal ceremonies, starting with 3<sup>rd</sup> place.

### Ceremonies

Please observe the best practices for ceremonies outlined in the FISU Protocol Guidelines p. 69 ff. Medalists are asked to wear their official garment. No flags or other symbols are allowed on the podium.

### Quarantine

Coaches & officials that have entered the quarantine cannot leave until the quarantine is over.

## 20. MEDIA COVERAGE

### Video

Film crews on skis and foot identifiable as such will be present in the competition area. After every competition we will release a recap video as well as other clips for athletes and staff to share and enjoy. After the event, there will be one big video for you to relive the 2024 FISU University Championship Ski Orienteering. Make ski orienteering visible by showing them to your families, friends, club mates and who ever might be interested. Please respect copyright and indicate the origin.

### Photo

Photographers identifiable as such will be present in the competition area. After every competition at 18:00 we will publish some highlight and action photos for athletes and staff to share and enjoy. Make ski orienteering visible by showing them to your families, friends, club mates and who ever might be interested. Please respect copyright and indicate the origin. More photos will be available some days after the event.

## Social Media

We will share live video, recorded video and photos on the official Instagram channel @fisuskiorienteering for ski orienteering fans all over the world to share and enjoy.

## Athlete information inquiry

Please help our speakers to create an atmosphere worthy of a World University Championship by filling out the following inquiry:

<https://forms.gle/ZnpdKCSbKcRhUTwA6>

## Team photos

Before the opening ceremony, all teams are invited to take a team photo. Please be on time.

Time	Nation	Time	Nation
16:05	Bulgaria	16:40	Japan
16:10	China	16:45	Latvia
16:15	Czechia	16:50	Lithuania
16:20	Estonia	16:55	Norway
16:25	Finland	17:00	Sweden
16:30	Germany	17:05	Switzerland
16:35	Italy	17:10	Türkiye

## Interviews

The three (3) best in each category should be prepared to answer a few questions after the flower/medal ceremony. Interviews may also happen in the mixed zone behind the finish line.




## 20. BULLETIN SCHEDULE

Bulletin 1	30.06.23
Bulletin 2	30.09.23
Bulletin 3	11.12.23
Bulletin 4	09.01.24



Welcome to the 2024 World  
University Championships  
Ski Orienteering  
Lantsch/Lenz Lenzerheide!

 Schweizerische Eidgenossenschaft  
Confédération suisse  
Confederazione Svizzera  
Confederaziun svizra

Bundesamt für Sport BASPO  
Office fédéral du sport OFSP  
Ufficio federale dello sport UFSP

 **SWISS**   
**olympic**  
spirit of sport

# SWISSLOS

