



FISU
WORLD
UNIVERSITY
CHAMPIONSHIP
SKI ORIENTEERING



graubünden

11th of December 2023

Bulletin 3

1. WELCOME TO LANTSCH/LENZ LENZERHEIDE

Dear friends,

I am delighted to welcome you to Lantsch/Lenz Lenzerheide for the 2024 FISU World University Championship Ski Orienteering.

Competing at the World University Championships is a career highlight for many university athletes. For others, it is a step up to the next level of performance. What they all have in common is that they meet like-minded people. May these competitions not only serve as a sporting comparison but also as an opportunity for intercultural exchange. This is of particular importance and significance in the challenging times we are all facing.

From this point of view, we are reminded of the need to prioritise sport and healthy social exchange. FISU firmly believes that university athletes are the role models and future leaders the world needs, now more than ever.

Over the following six days, you will compete alongside some of the best student athletes in the world. The FISU World University Championships demand skill, athleticism, and single-minded determination to do your best. But beyond the competition, FISU urges you to take full advantage of this moment. May you return home with memories that will last a lifetime and perhaps even some new friends from faraway places.

None of FISU's events would be possible, meanwhile, without the gracious generosity of our hosts. I want to extend our sincere gratitude to the National University Sports Federation of Switzerland, the organisers for their dedication and the volunteers for their strong will to serve this event. I am confident you will do the same.

FISU is also grateful for the ongoing support of the International Sports Federations. Together, we aim to provide the highest level of technical excellence on and off the field of play. We remain convinced that the best student athletes deserve nothing less.

I am confident that the 2024 FISU World University Championship Ski Orienteering in Lantsch/Lenz Lenzerheide will give you every opportunity to shine. I wish you the best of luck!



Leonz Eder
FISU President

On behalf of the International University Sports Federation, we would like to welcome you to the 2024 World University Championship Ski Orienteering in Lantsch/Lenz in the tourism destination of Lenzerheide from the 12th to the 16th of January 2024. Lenzerheide is located in Eastern Switzerland, in the Canton of Grisons. It is known for hosting a number of international sports events such as the Cross-country Skiing World Cup, the Biathlon World Cup and the MTB world cup, but that is not all. The three names of the region – Graubünden, Grischun and Grigioni – give a hint of the rich cultural fabric that can be experienced here, where German, Romansh, and Italian meet.

We are expecting the participation of more than fifteen nations and a colourful array of athletes who live the FISU motto “excellence in mind and body”! We will offer fair and exciting competitions in a breath-taking alpine landscape and are thrilled to see you competing.

See you there!

The organising committee

2. ABOUT

Organisers Swiss University Sports
Swiss Orienteering
Ski-O Swiss

Event manager Jürg Hellmüller

Competition Manager Hansruedi Häny

FISU Technical Delegate Markku Vauhkonen

IOF Senior Event Adviser Sixten Sild

Hosting city Lantsch/Lenz Lenzerheide, Switzerland

Event center Roland Arena
Via da Bual 2
CH-7083 Lantsch/Lenz



Map with all relevant locations.



Website	www.wusoc.ch
Social media	follow us on Instagram: @fisus_kiorienteering follow us on Facebook: 2024 FISU World University Championship Ski Orienteering
Contact	info@wusoc.ch

All relevant information will be published on the website as well as social media.

3. PROGRAMME

Date	FISU	WRE & Open
11.1.24	Model event	-
12.1.24	Sprint	WRE & Open Race
13.1.24	Pursuit	National event & WRE
14.1.24	Rest day	Swiss Championships
15.1.24	Middle	WRE & Open Race
16.1.24	Sprint Relay	Open Sprint Relay

From the 21st to the 27th of January 2024, the World Ski Orienteering Championships will take place in Ramsau am Dachstein, Austria. The competitions will share similarities in terrain with open areas and many wide tracks. The 2024 World University Championship Ski Orienteering can thus serve as valuable preparation for WSOC. Athletes not taking part in the World University Championship competitions can start in the spectator races that will use the same competition area and track system. **Members of WUC delegations (athletes and staff) are not allowed to start at the spectator race on Sunday 14.1.24.** Booking of accommodation well in advance is strongly recommended (see 8. accommodation).

4. PARTICIPATION

Competitors in the 2024 World University Championship Ski Orienteering must satisfy the following requirements:

- national of the country they represent
- born between the 1st of January 1999 and the 31st of December 2006
- enregistered with a university or other organisation that is recognised by the appropriate national academic authority of their country or having last been enregistered with such an organisation in the year before the competition (2023)

Delegations may consist of eight (8) female athletes, eight (8) male athletes and five (5) officials, totalling twenty-one (21) representatives per country.

5. REGISTRATION

Maximum entries per competition and country

Individual competitions: Six (6) female athletes & six (6) male athletes

Sprint relay: two (2) teams of two (2) athletes of which at least one (1) female

All delegations are required to register online through the FISU accreditation portal:

<https://accreditation.fisu.net/Pages/Home.aspx>

The entries are to be made by the National University Sports Federations.

Entry deadlines

General entry	12 th of August 2023
Quantitative entry	12 th of October 2023
Individual entry	12 th of December 2023

Individual entries need to happen in the FISU accreditation portal as well as IOF Eventor! The registration needs to be confirmed before the GTM of each race.

Entry fees

Registration fee	20 € per person
Participation fee	80 € per person & night

The entry fees should be paid per delegation to the following bank account:

Bank details

Bank PostFinance AG
Mingerstrasse 20, CH-3030 Berne, Switzerland

Account 16-600122-1

WUSOC 2024
Mühlestrasse 28
CH-7260 Davos Dorf

IBAN CH96 0900 0000 1606 0122 1

BIC POFICHBEXXX

BCC 09000

6. TRAVEL

All delegations are responsible for their arrival in and departure from Switzerland. Transport from and to the different access points will be organised.

Mode of transport	Access point
Train	Chur main station
Team bus	Roland Arena Lantsch/Lenz
Plane	Zurich airport

The mode of transport is to be communicated to the organiser until the 15th of December 2023 by filling out the following inquiry:

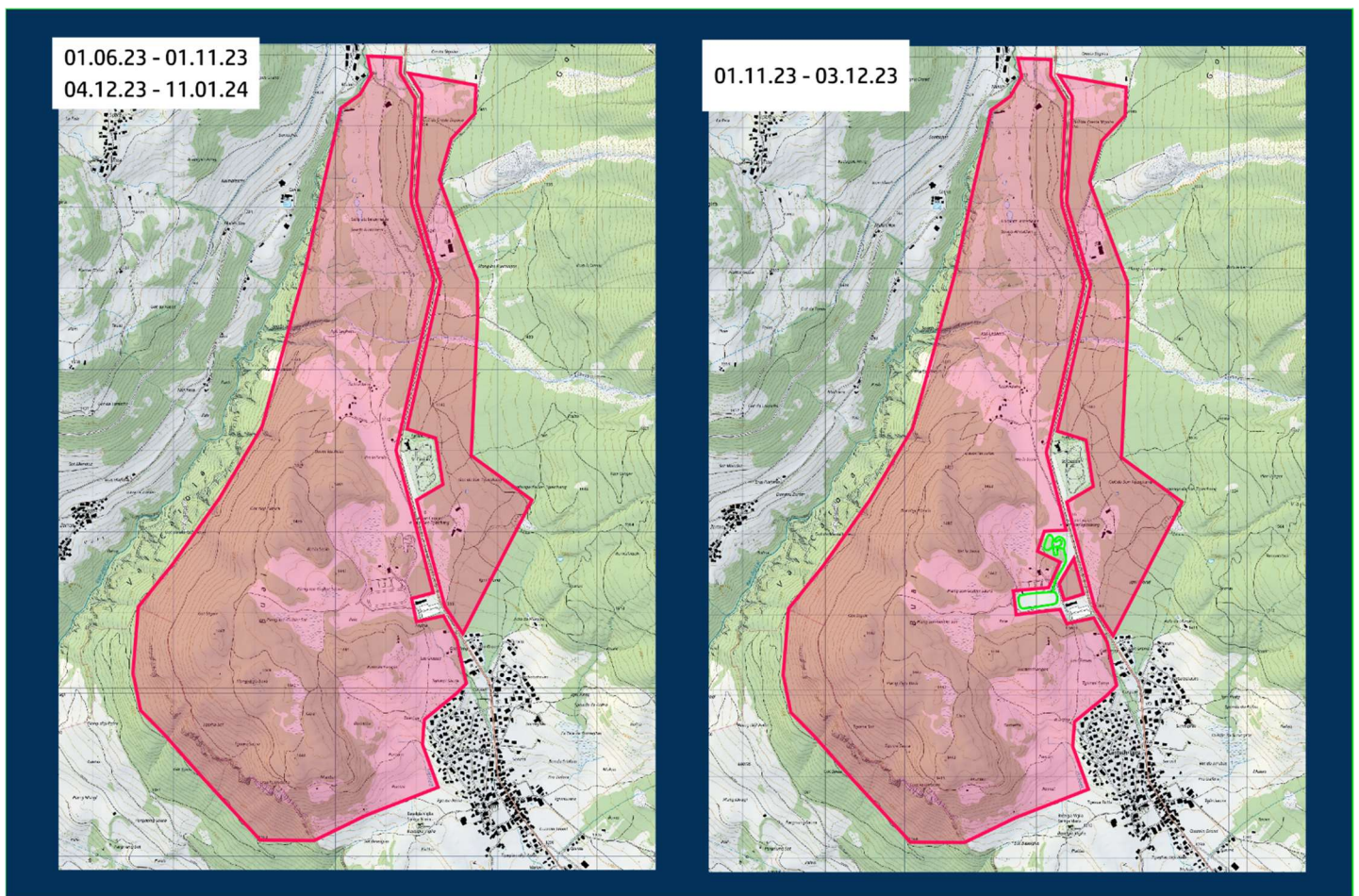
<https://forms.gle/FCJwxEn1HQSx7A48>

Please consider travelling by train where feasible and help us to make the World University Championship Ski Orienteering a sustainable event. Our partner SimpleTrain will gladly help you organise your train travel and grant you a generous offer on their service.

During competition week, transport to and from the competition centre will be organised.

7. EMBARGOED AREA & TERRAIN

The embargo is in effect with the publication of Bulletin 0 on the 16th of June 2023 and ends after the sprint relay on the 16th of January 2024. The cantonal road from Lantsch/Lenz to Lenzerheide, the campsite St. Cassian, as well as the parking area and main building of the Roland Arena are except from the embargoed area. From the 1st of November until the 3rd of December 2023, the snow-farming track as indicated in the map on the right is open for training. In order to guarantee fair competitions, the snow-farming track will be open for inspection during the model event on the 11th of January



2024. During competition week are competing athletes except from the embargo for the duration of their race.

From the Roland Arena in Lantsch/Lenz country tracks spread out to the North, West and South which will be complemented with scooter tracks where suitable. The competitions area is located between 1350m a.s.l. and 1500m a.s.l and covers coniferous

forest, semi-open areas and open areas including a golf park. Visibility in the forest is generally good to moderate. Climbs and descents can be steep.

Previous maps from ESOC 2015 can be found under wusoc.ch.

Weather & snow conditions

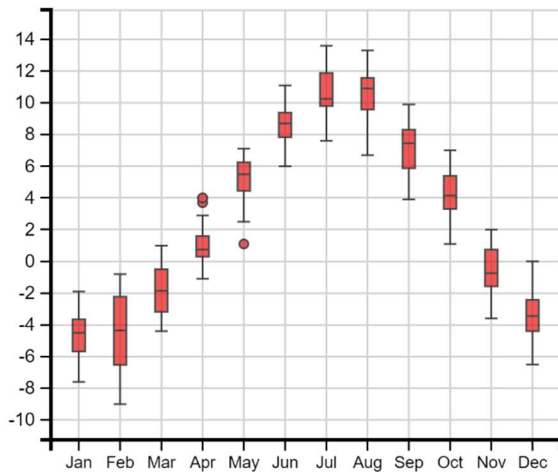
Good snow conditions can never be guaranteed but thanks to the altitude, the Lenzerheide high valley normally sees snow most of the winter. The competition area is exposed to the South and surrounded by mountain ranges which lead to a somewhat drier climate. While temperatures below 0° C can be expected, the variation in precipitation in December and the beginning of January may have a negative impact on the snow conditions. Thanks to artificial snow production and snowfarming, the track in the stadium gets usually prepared at the beginning of November. Track quality may thus vary between inside the stadium and outside under scarce snow conditions.

Be aware that weather conditions on competition day can change quickly due to the mountainous location and clothe accordingly.

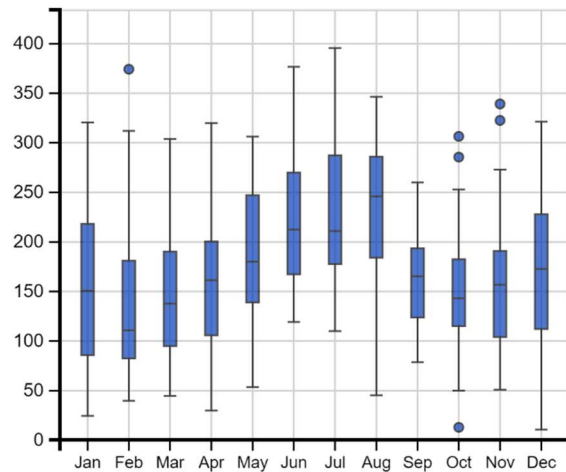
Lantsch/Lenz, Grisons, Switzerland

46.692N, 9.559E | Elevation: 1392 m | Climate Class: Dfc | Years: 1990-2019

Distribution of Temperature [°C]



Distribution of Precipitation [mm]



Data Source: CRU Time Series v4.05
<https://catalogue.ceda.ac.uk/uuid/c26a65020a5e4b80b20018f148556681>

ClimateCharts.net

8. ACCOMODATION

Hotel Post Cunter



Hotel Albul & Julier Tiefencastel



JUFA-Hotel Savognin



Hotel Krone Churwalden



Due to the World Economic Forum taking place in Davos during the 2024 World University Championship Ski Orienteering will the delegations be accommodated in different 3-star hotels located in the towns of Churwalden, Tiefencastel, Cunter and Savognin. Transport time to the competition centre in Lantsch/Lenz is 15-25 minutes. Participants in the spectator races should find suitable accommodation online. The organiser can be of assistance if needed. Early booking is strongly recommended.

9. WAXING FACILITIES

Waxing facilities will be available in the competition centre at the biathlon arena Lantsch/Lenz.

10. LEGAL NOTICE

Insurance

All competitors and staff participate at their own risk. Insurance against accidents and illness is the responsibility of the participants.

Changes in program & cancellation of competitions

The organisers can change the program or cancel competitions if the conditions call for such a change. Conditions include among others the snow situation, extreme weather and matters of public health and safety.

Protection of data

In accordance with Swiss and EU data protection laws do all participants (competitors and staff) consent to the possibility of being photographed and filmed during the competitions and on the premises of the 2024 FISU World University Championship Ski Orienteering as well as being featured on the official Instagram and Facebook channels.

Competition rules

The IOF competition rules 2022 apply to the 2024 FISU World University Championship Ski Orienteering.

The IOF competition rules for WRE races 2022 apply to the WRE open races.

Fluor ban

The IOF fluor ban declaration applies to the 2024 FISU World University Championship Ski Orienteering as well as the WRE open races.

Anti-doping

The FISU anti-doping rules apply to the 2024 FISU World University Championship Ski Orienteering.

The IOF anti-doping rules apply to the WRE spectator races.

Transparency

Family members and club mates of participating Swiss athletes as well as non-participating athletes of the Swiss national team are involved in the organisation of the 2024 FISU World University Championship Ski Orienteering. We appreciate that this can pose a threat to the fair play our sport relies on. However, ski orienteering is a small sport and without the involvement of these people, we could not offer competitions of the highest quality. Extra care will be taken to make sure no confidential details reach any of the participating athletes.

11. TECHNICAL INFO

Time keeping

Time keeping will be based on SPORTident. All competitors will carry two SI cards, one main unit and one back-up unit. These will be provided by the organiser, except for athletes that want to race with their personal SI card. They will be provided only with a back-up unit. Please make sure that the card ID registered in IOF Eventor matches the ID of the personal SI cards used. Touch-free punching will be activated.

Bibs

All competitors will be provided with bibs that are to be carried during the whole competition in order to guarantee fairplay and safety.

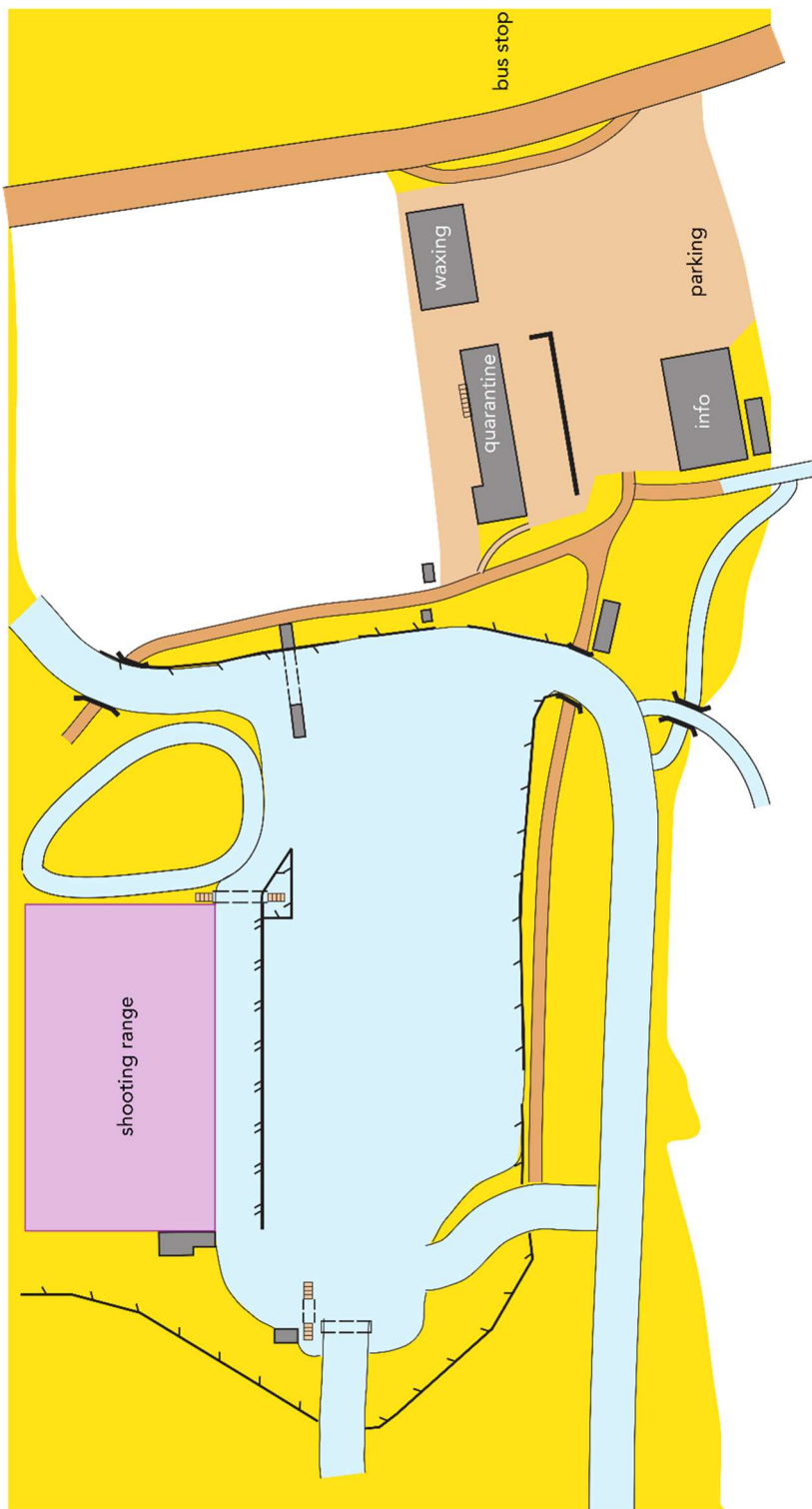
GPS

All competitors will be provided with a GPS unit. The live tracking will be published and shown in daily videos and social media. The GPS units are to be returned at the of the week.

12. DETAILED SCHEDULE

Thursday	Model event	11.1.24
10:00	Model event on the snow farming track	
15:00	Model event closed	
16:00	General Technical Meeting Sprint & Pursuit	
17:30	Opening ceremony	
Friday	Sprint	12.1.24
10:00	1 st start men	
11:30	1 st start women	
13:00	Medal ceremony	
14:00	1 st start WRE & open races	
Saturday	Pursuit	13.1.24
10:00	1 st start women	
11:00	1 st start men	
12:15	Medal ceremony	
13:00	1 st start national competition	
Sunday	Rest day	14.1.24
12:00	1 st start open races & Swiss championship	
	No start for members of WUC delegations!	
14:00	General Technical Meeting Middle & Sprint Relay	
Monday	Middle	15.1.24
10:00	Mass start women	
11:30	Mass start men	
13:15	Medal ceremony	
14:00	1 st start WRE & open races	
Tuesday	Mixed sprint relay	16.1.24
10:00	Mass start	
12:15	Flower ceremony	
13:00	Mass start open races	
18:00	Medal & closing ceremony	

12. ARENA LAYOUT & FACILITIES




13. BULLETIN SCHEDULE

Bulletin 1	30.6.23
Bulletin 2	30.9.23
Bulletin 3	11.12.23
Bulletin 4	shortly before the event



Welcome to the 2024 World
University Championships
Ski Orienteering
Lantsch/Lenz Lenzerheide!

 Schweizerische Eidgenossenschaft
Confédération suisse
Confederazione Svizzera
Confederaziun svizra

Bundesamt für Sport BASPO
Office fédéral du sport OFSPO
Ufficio federale dello sport UFSPÖ

 **swiss** 
olympic
spirit of sport

SWISSLOS

