



FISU
WORLD
UNIVERSITY
CHAMPIONSHIP
SKI ORIENTEERING



graubünden

30th of June 2023

Bulletin 1

1. WELCOME

On behalf of the International University Sports Federation, we would like to welcome you to the 2024 World University Championship Ski Orienteering in Lantsch/Lenz in the tourism destination of Lenzerheide from the 12th to the 16th of January 2024. Lenzerheide is located in Eastern Switzerland, in the Canton of Grisons. It is known for hosting a number of international sports events such as the Cross-country Skiing World Cup, the Biathlon World Cup and the MTB world cup, but that is not all. The three names of the region – Graubünden, Grischun and Grigioni – give a hint of the rich cultural fabric that can be experienced here, where German, Romansh, and Italian meet.

We are expecting the participation of more than fifteen nations and a colourful array of athletes who live the FISU motto “excellence in mind and body”! We will offer fair and exciting competitions in a breath-taking alpine landscape and are thrilled to see you competing.

See you there!

2. ABOUT

Organisers Swiss University Sports

Swiss Orienteering

Ski-O Swiss

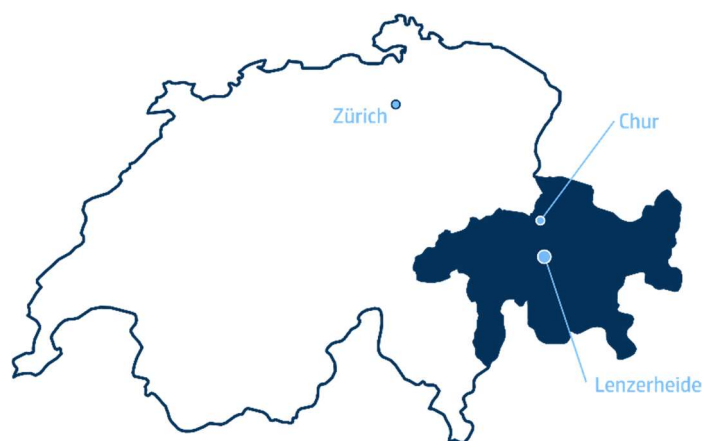
Event manager Jürg Hellmüller

Competition Manager Hansruedi Häny

FISU Technical Delegate Markku Vauhkonen

IOF Senior Event Adviser Sixten Sild

Hosting city Lantsch/Lenz Lenzerheide, Switzerland



Event center Roland Arena
Via da Bual 2
CH-7083 Lantsch/Lenz



Map with all relevant locations.

Website www.wusoc.ch

Social media follow us on Instagram:
@fisu_skiorienteering

follow us on Facebook:
2024 FISU World University Championship Ski Orienteering

Contact info@wusoc.ch

All relevant information will be published on the website as well as social media.

3. PROGRAMME

Date	FISU	WRE & Open
11.1.24	Model event	-
12.1.24	Sprint	WRE & Open
13.1.24	Pursuit	National Event
14.1.24	Rest day	Swiss Championships
15.1.24	Middle	WRE & Open
16.1.24	Sprint Relay	Open Sprint Relay

From the 21st to the 27th of January 2024, the World Ski Orienteering Championships will take place in Ramsau am Dachstein, Austria. The competitions will share similarities in terrain with open areas and many wide tracks. The 2024 World University Championship Ski Orienteering can thus serve as valuable preparation for WSOC. Athletes not taking part in the World University Championship competitions can start in the spectator races

that will use the same competition area and track system. Booking of accommodation well in advance is strongly recommended (see 8. accommodation).

4. PARTICIPATION

Competitors in the 2024 World University Championship Ski Orienteering must satisfy the following requirements:

- national of the country they represent
- born between the 1st of January 1999 and the 31st of December 2006
- enregistered with a university or other organisation that is recognised by the appropriate national academic authority of their country or having last been enregistered with such an organisation in the year before the competition (2023)

Delegations may consist of eight (8) female athletes, eight (8) male athletes and five (5) officials, totalling twenty-one (21) representatives per country.

Maximum entries per competition and country

Individual competitions: Six (6) female athletes & six (6) male athletes

Sprint relay: two (2) teams of two (2) athletes of which at least one (1) female

5. REGISTRATION

All delegations are required to register online through the FISU accreditation portal:

<https://accreditation.fisu.net/Pages/Home.aspx>

Entry deadlines

General entry	12 th of August 2023
Quantitative entry	12 th of October 2023
Individual entry	12 th of December 2023

Entry fees

Registration fee	20 € per person
Participation fee	80 € per person & night*

The entry fees should be paid per delegation to the following bank account:

Bank details

Bank PostFinance AG
Mingerstrasse 20, CH-3030 Berne, Switzerland

Account 16-600122-1

WUSOC 2024
Mühlestrasse 28
CH-7260 Davos Dorf

IBAN CH96 0900 0000 1606 0122 1
BIC POFICHBEXXX
BCC 09000

*The increase in the participation fee is due to the high cost of living in Switzerland

6. TRAVEL

All delegations are responsible for their arrival in and departure from Switzerland. Transport from and to the different access points will be organised.

Mode of transport	Access point
Train	Chur main station
Team bus	Roland Arena Lantsch/Lenz
Plane	Zurich airport

The mode of transport is to be communicated to the organiser until the 12th of October 2023 by filling out the following inquiry:

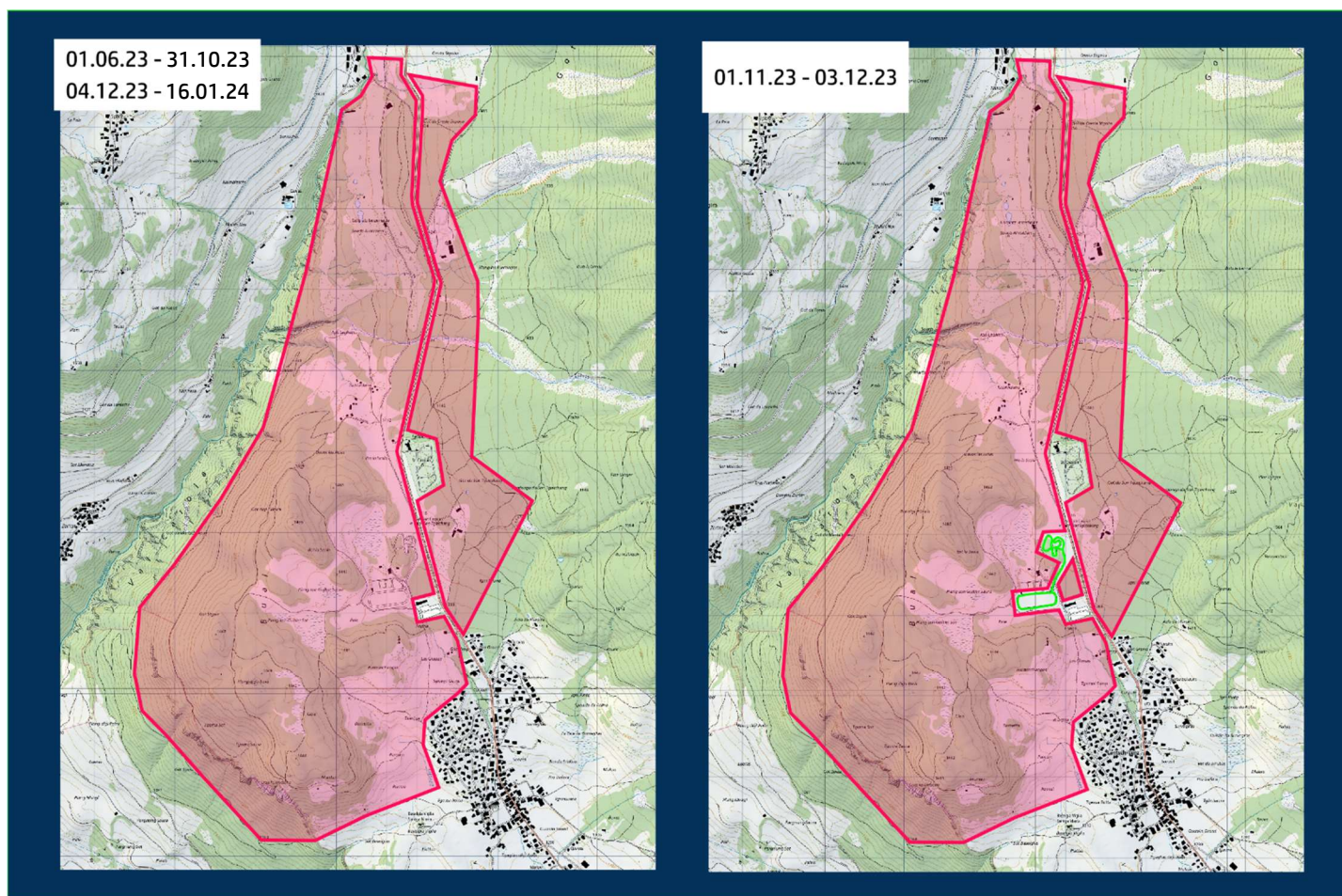
<https://forms.gle/FCJwxEn1HQSex7A48>

Please consider travelling by train where feasible and help us to make the 2024 World University Championship Ski Orienteering a sustainable event. Our partner SimpleTrain will gladly help you organise your train travel and grant you a generous offer on their service. Bulletin 2 will contain more information concerning sustainable travelling.

During competition week, transport to and from the competition centre will be organised.

7. EMBARGOED AREA & TERRAIN

The embargo is in effect with the publication of Bulletin 0 on the 16th of June 2023 and ends after the sprint relay on the 16th of January 2024. The cantonal road from Lantsch/Lenz to Lenzerheide, the campsite St. Cassian, as well as the parking area and main building of the Roland Arena are except from the embargoed area. From the 1st of November until the 3rd of December 2023, the snow-farming track as indicated in the map on the right is open for training. In order to guarantee fair competitions, the snow-farming track will be open for inspection during the model event on the 11th of January 2024. During competition week are competing athletes except from the embargo for the duration of their race.



From the Roland Arena in Lantsch/Lenz country tracks spread out to the North, West and South which will be complemented with scooter tracks where suitable. The competitions area is located between 1350m a.s.l. and 1500m a.s.l and covers coniferous



forest, semi-open areas and open areas including a golf park. Visibility in the forest is generally good to moderate. Climbs and descents can be steep.

8. ACCOMODATION

Hotel Post Cunter



Hotel Albula & Julier Tiefencastel



JUFA-Hotel Savognin



Hotel Krone Churwalden



Due to the World Economic Forum taking place in Davos during the 2024 World University Championship Ski Orienteering will the delegations be accommodated in different 3-star hotels located in the towns of Churwalden, Tiefencastel, Cunter and Savognin. Transport time to the competition center in Lantsch/Lenz is 15-25 minutes. Participants in the spectator races should find suitable accommodation online. The organiser can be of assistance if needed. Early booking is strongly recommended.

9. BULLETIN SCHEDULE

Bulletin 1	30.6.23
Bulletin 2	30.9.23
Bulletin 3	30.11.23
Bulletin 4	shortly before the event



Welcome to the 2024 World
University Championships
Ski Orienteering
Lenz/Lantsch Lenzerheide!